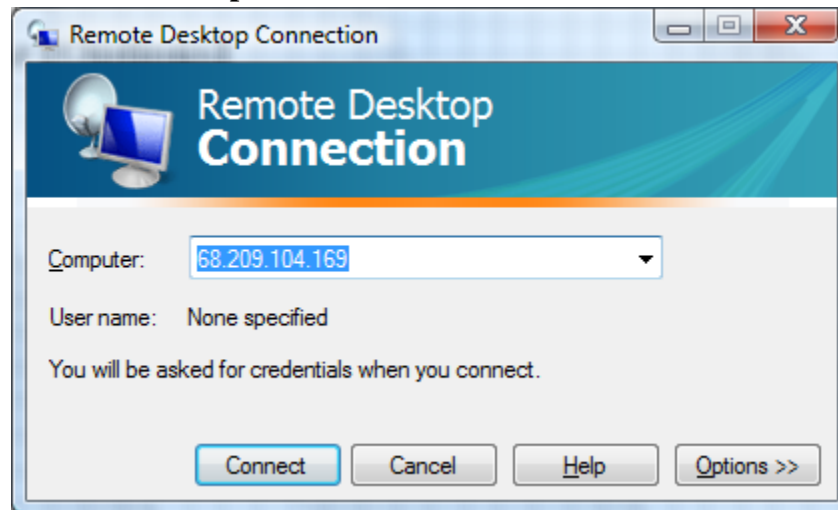
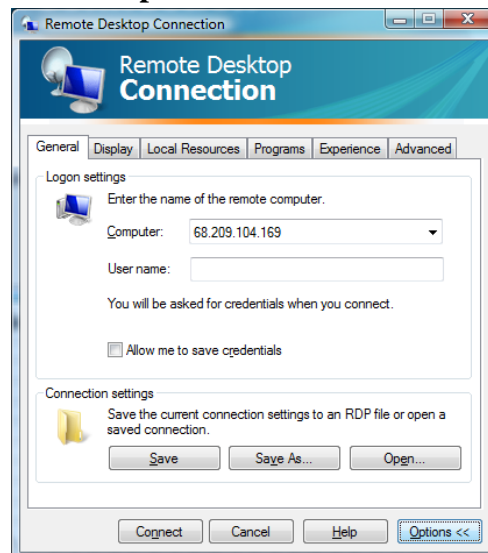


How to Access the S.E.A.D.S. MP3 and Music Video Files

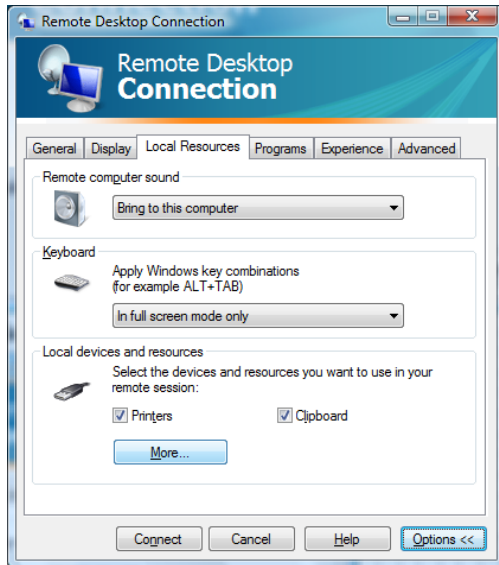
1. Using Windows Visit Go to your Start Button on Bottom Left
 - a. Go to: Start – All Programs – Accessories
 - b. Choose: “Remote Desktop Connection”
 - c. A window will Pop up saying “Remote Desktop Connection”
2. Where it says Computer you will need to type in the SEADS IP Address
 - a. 68.209.104.169
 - b. Then Choose [Options]



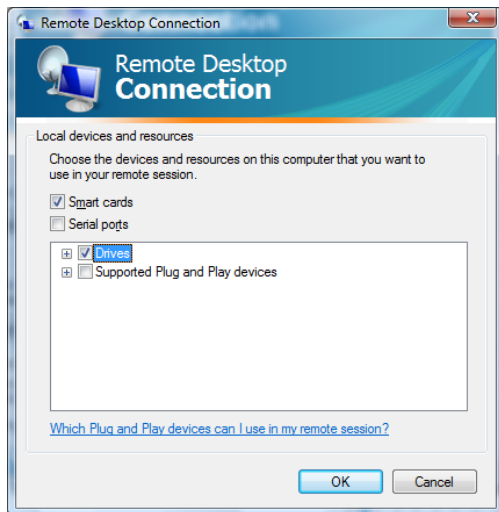
- c.
- d. Choose Options



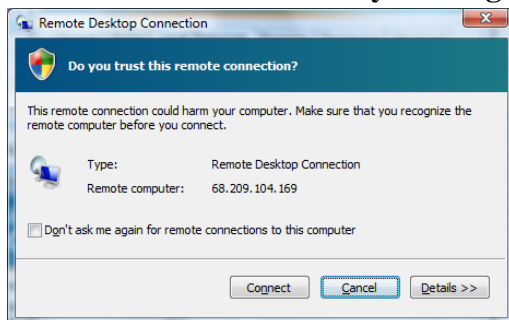
- e.
- f. Choose Local Resources then More



- g.
- h. Put a Check Mark in Drives**

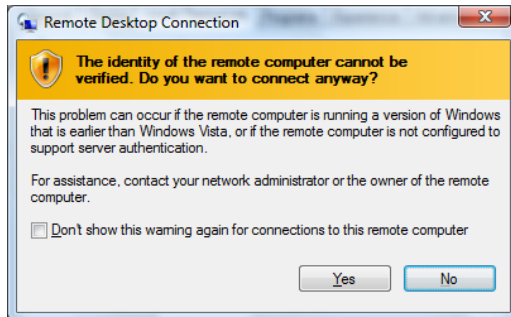


- i.
- j. Choose OK**
- k. Then Choose Connect and you will get a Window Like this Below:**

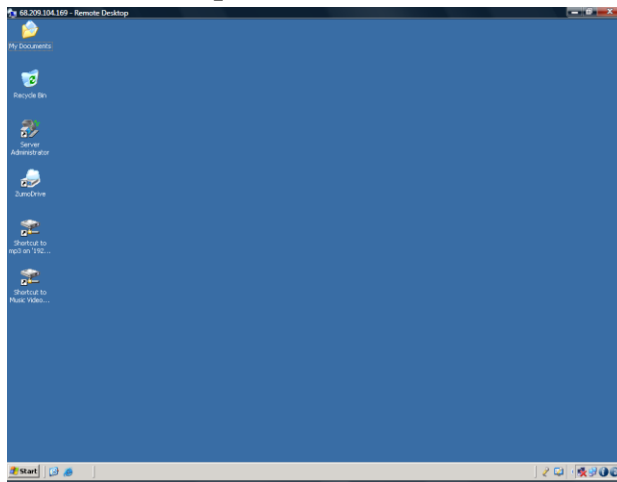


- l. m. Be sure the correct IP is Listed in the Remote Computer line**
 - i. 68.209.104.169**

3. Next you will see a Security warning like Below:



- a.
 - b. Choose Yes
 - c. Next you will see a Logging screen for the SEADS Web Server
4. Type your Username and password In the appropipet Boxes
 5. You will be required to change your password the first time you log in Use what ever password you want but it must be 6 chareters Minimum
 6. Once you have Connected to the Webserver you will get a Generic Desktop. On your Desktop are to Network links to my File Server and access to the MP3 and Music Videos Network Drives.
 7. Once you click on these Network Drives you should have read access to all of SEADS Music and Music Video selections. Enjoy.
 8. You will have to copy the files you wish to access to your local Drive to be able to listen to the Music as your Remote Desktop does not have the necessary devices to play these files remotely.
 9. Once copied to your local Computer you can play the files or burn them as you please on your Local Computer.



- 10.
11. Note the two Network Drives on Left bottom of sample Desk top
12. Click the Icons to open network drives remotely from any location.

Should you need further info Please Contact SEADS Tech Support.

(954) 689-7573